



**FOR MORE INFORMATION CONTACT YOUR
LOCAL DISTRIBUTOR OR SALESMAN.**



HOME OF THE GOURMET BURGER

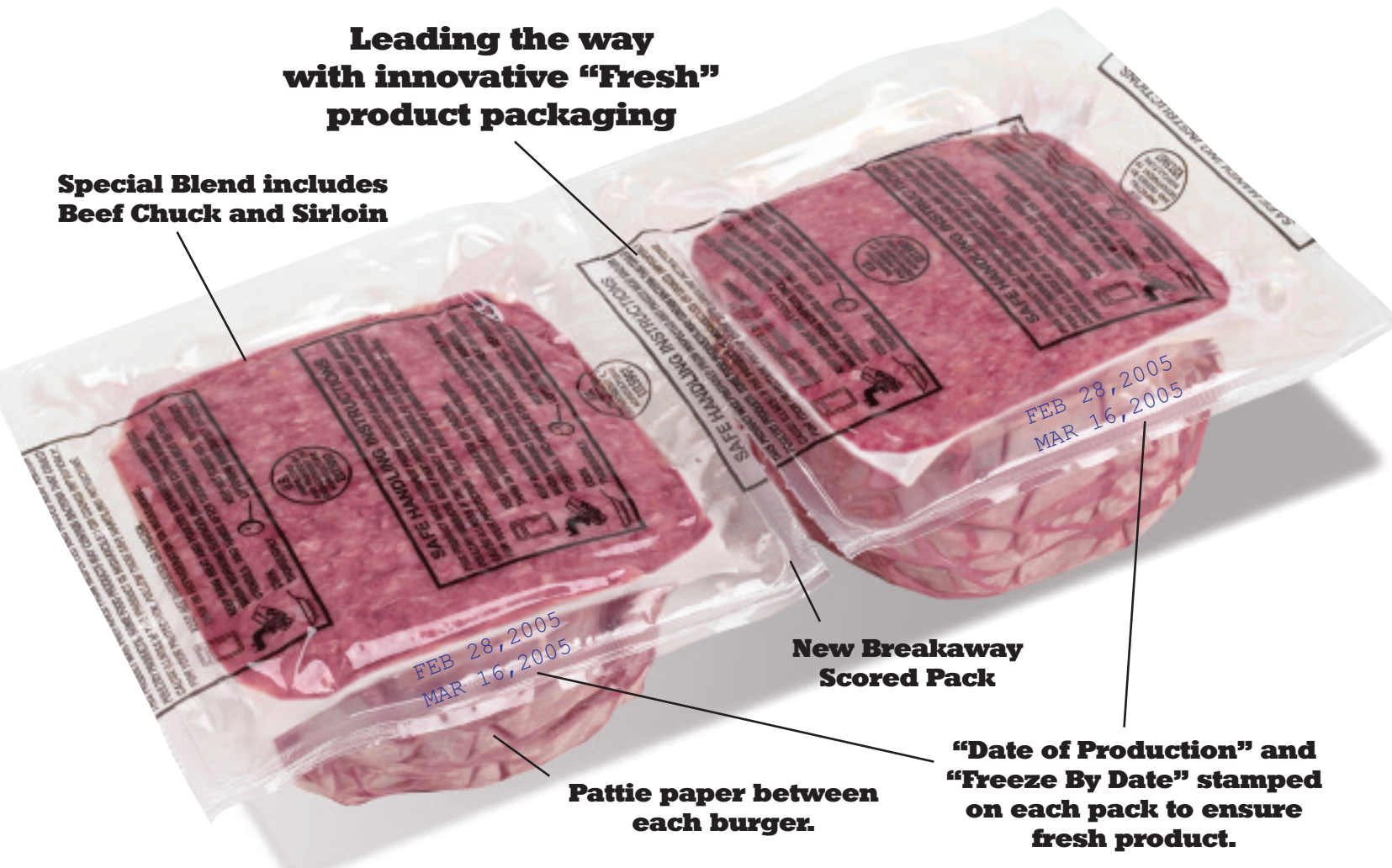




BURGER MAKER OFFERS A WIDE CHOICE OF FRESH GROUND BEEF & FRESH ANGUS GROUND CHUCK PATTIES.

Leading the way
with innovative "Fresh"
product packaging

Special Blend includes
Beef Chuck and Sirloin



New Breakaway
Scored Pack

Pattie paper between
each burger.

"Date of Production" and
"Freeze By Date" stamped
on each pack to ensure
fresh product.

FIRE RIVER FARMS PRODUCT ADVANTAGES:

- Special blend includes Beef Chuck and Beef Sirloin.
- Fresh has extended 21-day shelf life on packaging.
- Production date on every box and inner pack.
- Most shapes and sizes available.
- Hand-made bite and taste.
- Industry leading safety quality control.



BULK AVAILABLE FRESH OR FROZEN:

Blends of 75/25, 80/20, 85/15 and 90/10.

CASE PACKS:

2/5's, 4/5's, 8/5's, 12/5's, 1/10's, 2/10's, 4/10's & 8/10's.



TUBES



BAGS

WIDE VARIETY OF FROZEN PATTIES AVAILABLE



ROUND



PUB/HOMESTYLE



OVAL



WAFFLE

GROUND BEEF PATTIES- FROZEN ONLY

- Made with selected beef cuts with careful consideration given to quality.
- Available in a wide variety of sizes, shapes and thicknesses.
- Naturally frozen in blast freezer or also available in IQF.
- Patties are *TenderForm® made.



100% BEEF PATTIES- FROZEN

- Made with fresh and frozen beef trimmings with careful consideration given to quality and price.
- Available in 80/20 and 75/25.
- Naturally frozen in blast freezer or also available in IQF.
- Patties are *TenderForm® made.

*TENDERFORM®

The TenderForm® process assembles patties from vertical columns of meat. The filling system forms tiny air passages within the burger to allow heat to pass through, for a more evenly cooked patty. Conventional filling systems form patties in layers.